

JACKET

GARMENT: GILET

MENS CODE - PLJK013

Ref Code - LSJK013

Sizes: 2XS - 7XL

LSSPEC-5122CR

MAIN FABRIC CODE: 029

Detail: 100% Polyester Double Weave

LINING FABRIC CODE: 047

Detail: 100% Polyester 210T Taffeta

CUT AND SEW COLOURS :

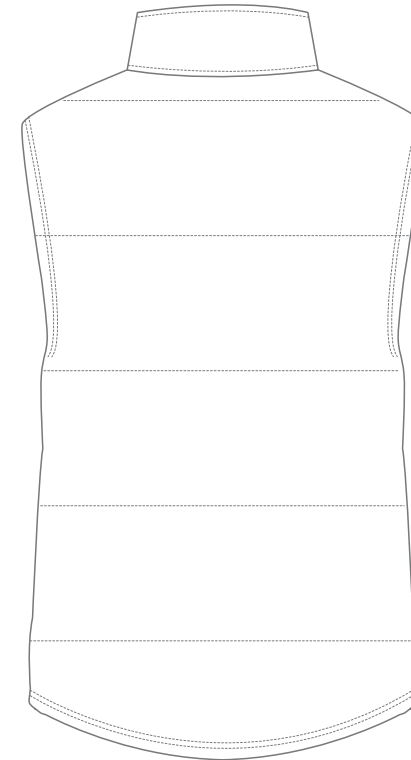
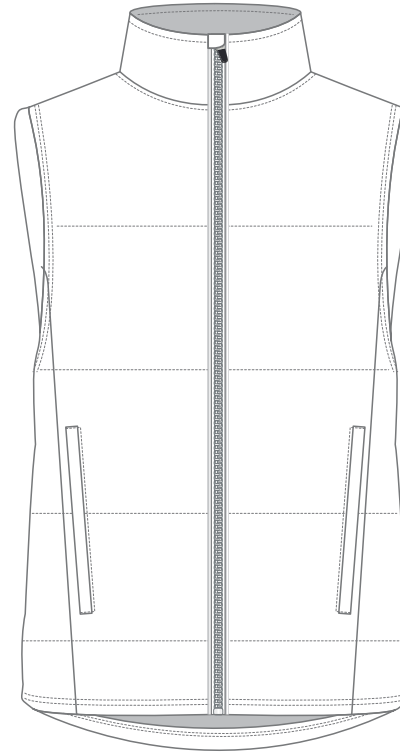
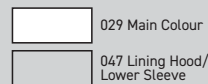
C&S 029



C&S 047



COMPOSITION:



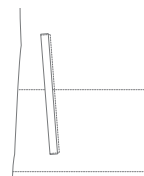
TRIMS: ZIP

Silver (Reflective Tape)
3mm Cord Piping
on both Sides of Zip



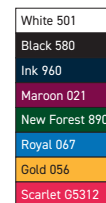
TRIMS: POCKET

Side Pocket



TRIMS: ZIP

Colors



JACKET

GARMENT: SUB TRACK JACKET

MENS CODE - PLJK010

Ref Code - LSJK010

Sizes: 2XS - 7XL LSSPEC-5022CR

JUNIOR CODE - PLJK210

Ref Code - LSJK210

Sizes: J6 - J14 LSSPEC-7022CR

MAIN FABRIC CODE: 004

Detail: 110gsm 100% Polyester tactel

LINING BODY/UPPER SLEEVE FABRIC CODE: 0224

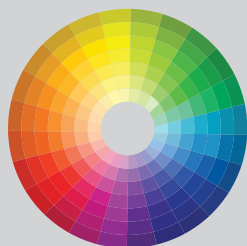
Detail: 135gsm 65% Polyester 35% Cotton

LINING LOWER SLEEVE FABRIC CODE: 047

Detail: 90gsm 100% Nylon Taffeta

CUT SUB COLOURS :

SUB 004

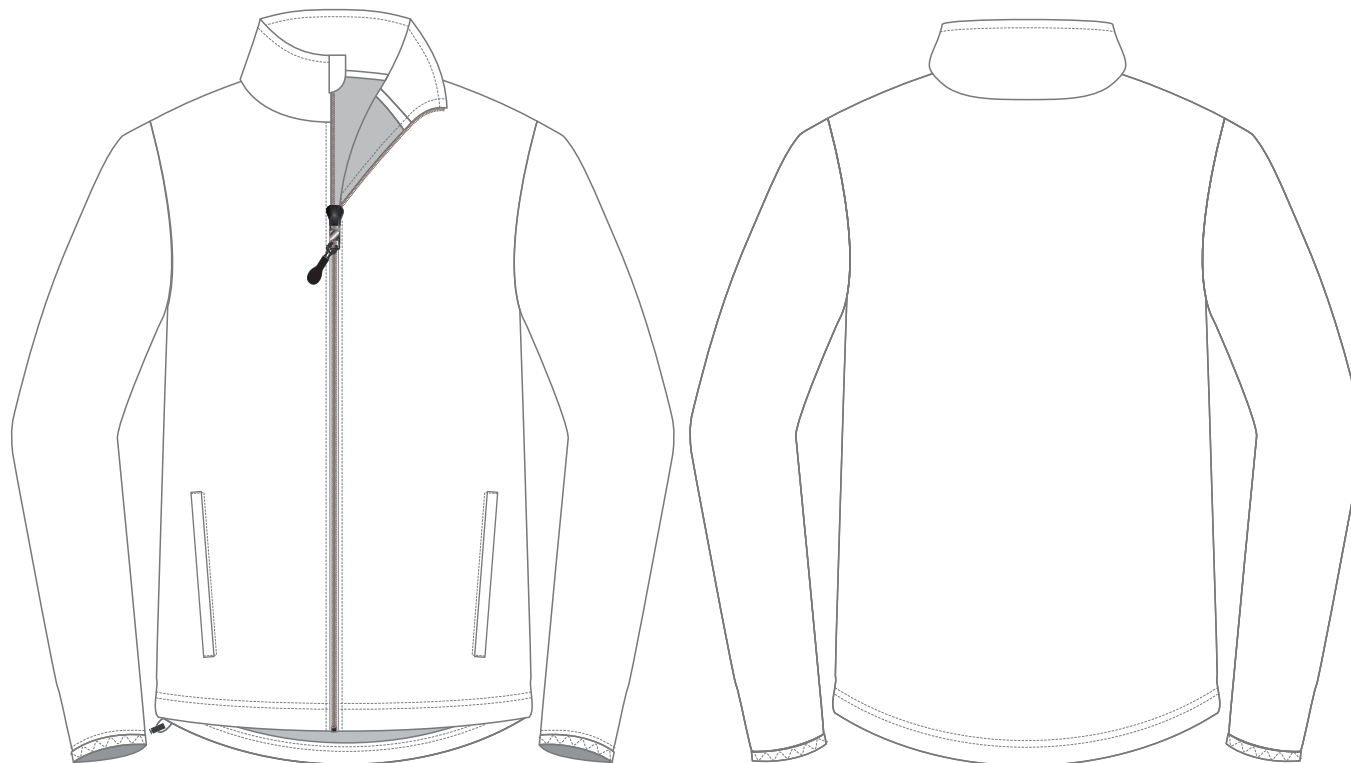


C&S 047



COMPOSITION:

	SUB 011 Main
	C&S 0224 Lining Body/ Upper SLV
	C&S 047 Lining Lower SLV



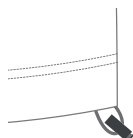
TRIMS: ZIP

Full Zip Collar with Zip Protector



TRIMS: Draw-String

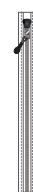
Draw-string Toggle with Securing Loop



TRIMS: FULL ZIP

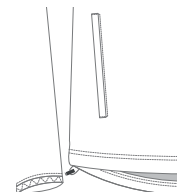
Colors

White 501
Black 580
Ink 960
Maroon 021
New Forest 890
Royal 067
Gold 056
Scarlet G5312



TRIMS: POCKET

Welt Zip Pockets



JACKET

GARMENT: BONDED 1/4 ZIP

MENS CODE - PLJK001

Ref Code - LSJK001

Sizes: 2XS - 7XL | LSSPEC-5022CR

MENS CODE - PLJK201

Ref Code - LSJK201

Sizes: J6 - J14 | LSSPEC-7022CR

MAIN FABRIC CODE: 045

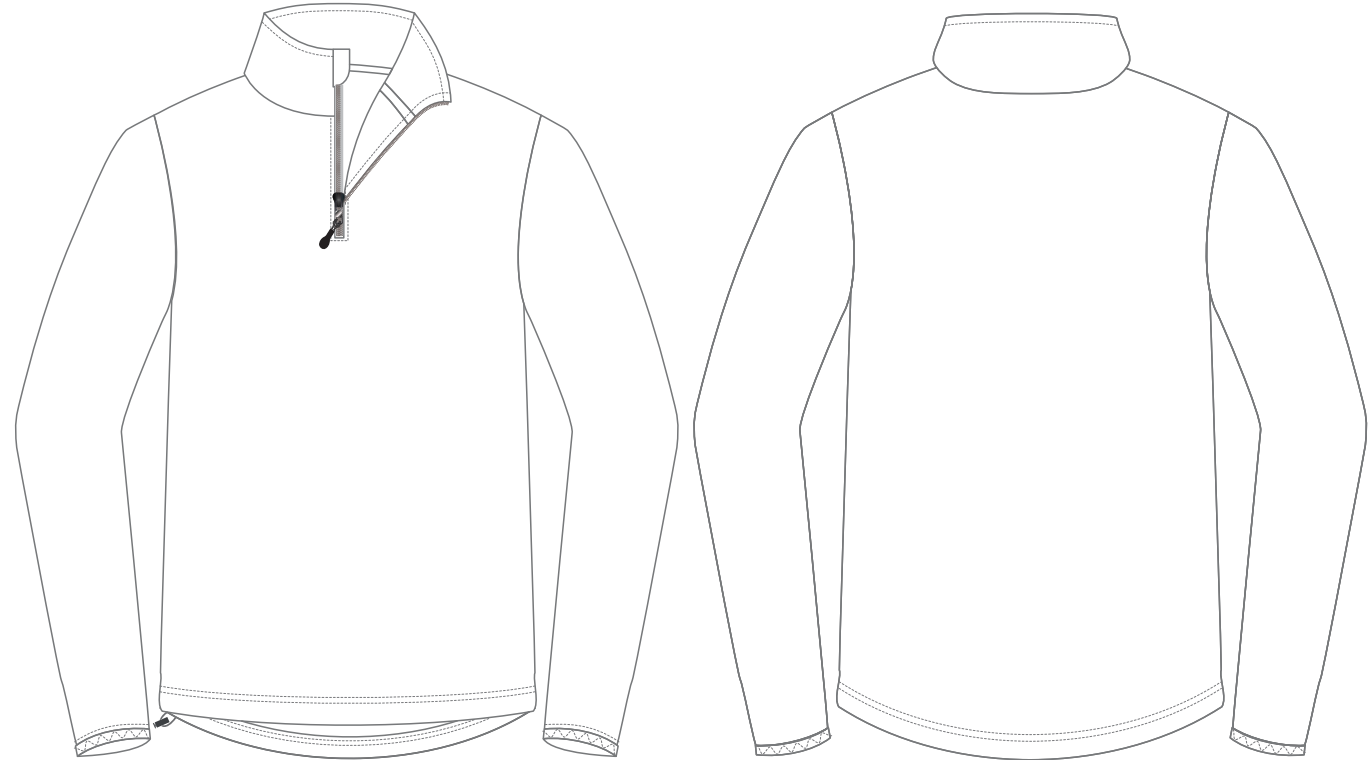
Detail: 256gsm 100% Polyester Light Weight Bonded Fleece

CUT AND SEW COLOURS :



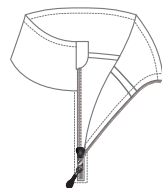
COMPOSITION:

 Main Colour



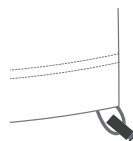
TRIMS: ZIP

1/4 Zip Collar with Hang Hood Storm Hoop with Velcro



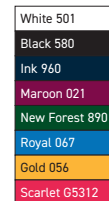
TRIMS: Draw-String

Draw-string Toggle with Securing Loop



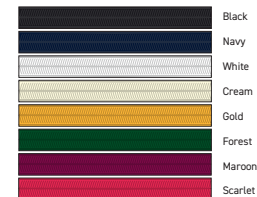
TRIMS: 1/4 ZIP

Colors



TRIMS:

Neck Tape
10mm 100% Polyester



JACKET

GARMENT: BONDED FULL ZIP

MENS CODE - PLJK004

Ref Code - LSJK004

Sizes: 2XS - 7XL | LSSPEC-5022CR

MENS CODE - PLJK204

Ref Code - LSJK204

Sizes: J6 - J14 | LSSPEC-7022CR

MAIN FABRIC CODE: 045

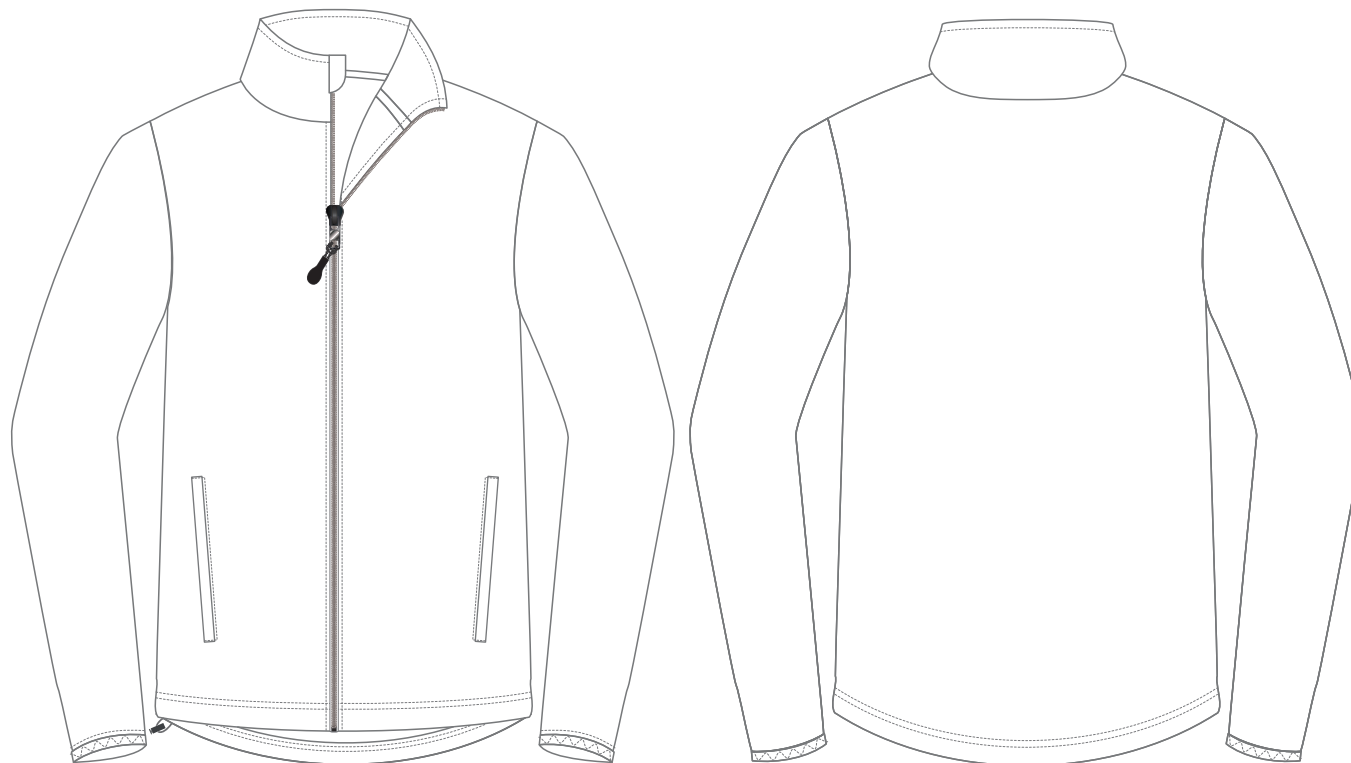
Detail: 256gsm 100% Polyester Light Weight Bonded Fleece

CUT AND SEW COLOURS :



COMPOSITION:

 Main Colour



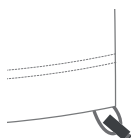
TRIMS: ZIP

Full Zip Collar with Zip Protector



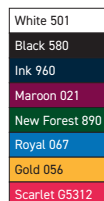
TRIMS: Draw-String

Draw-string Toggle with Securing Loop



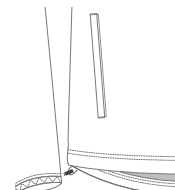
TRIMS: FULL ZIP

Colors



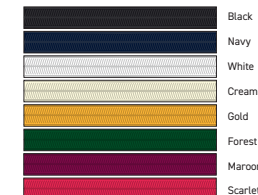
TRIMS: POCKET

Welt Zip Pockets



TRIMS:

Neck Tape
10mm 100% Polyester



JACKET

GARMENT: TRAVEL JACKET

MENS CODE - PLJK007

Ref Code - LSJK007

Sizes: 2XS - 7XL

LSSPEC-5022CR

MENS CODE - PLJK207

Ref Code - LSJK207

Sizes: J6 - J14

LSSPEC-7022CR

MAIN FABRIC CODE: 145

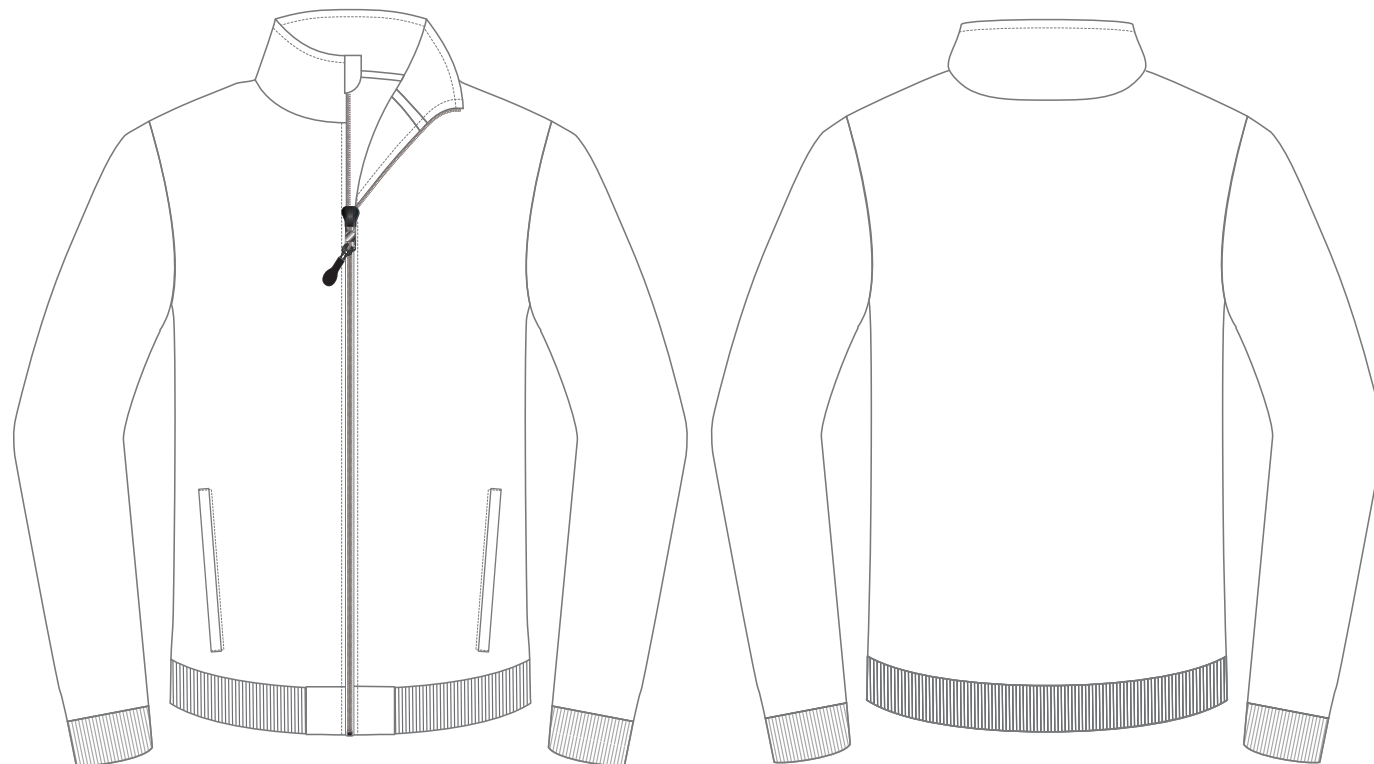
Detail: 280gsm 24% Cotton 76% Polyester 32S
Double Knit Interlock Shrinkage:-8%

CUT AND SEW COLOURS :



COMPOSITION:

 Main Colour



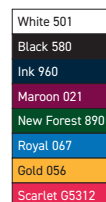
TRIMS: ZIP

Full Zip Collar with Zip Protector



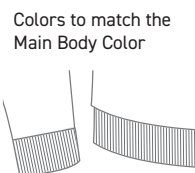
TRIMS: FULL ZIP

Colors



TRIMS: 2x2 Cuff & Band

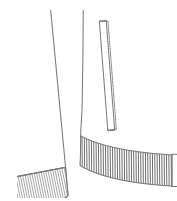
Colors



Colors to match the Main Body Color

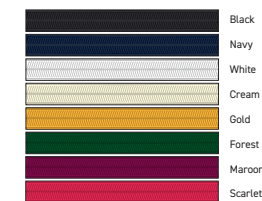
TRIMS: POCKET

Welt Zip Pockets



TRIMS:

Neck Tape
10mm 100% Polyester



JACKET

GARMENT: GILET

MENS CODE - PLJK014

Ref Code - LSJK014

Sizes: 2XS - 7XL

LSSPEC-5122CR

MAIN FABRIC CODE: 029

Detail: 100% Polyester Double Weave

LINING FABRIC CODE: 047

Detail: 100% Polyester 210T Taffeta

CUT AND SEW COLOURS :

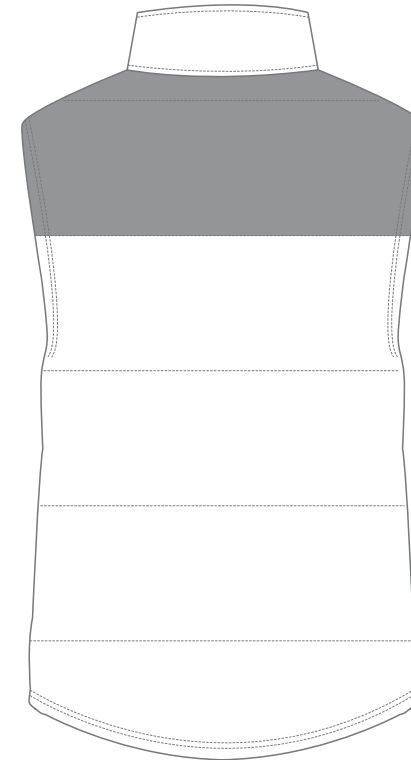
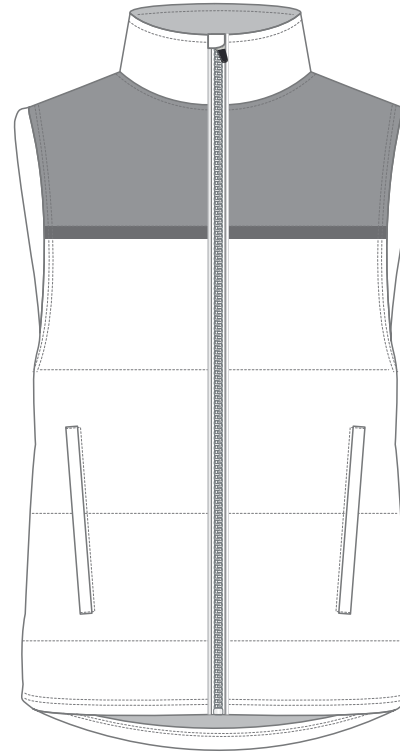
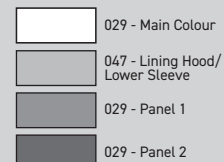
C&S 029



C&S 047



COMPOSITION:



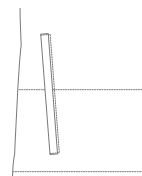
TRIMS: ZIP

Silver (Reflective Tape)
3mm Cord Piping
on both Sides of Zip



TRIMS: POCKET

Side Pocket



TRIMS: ZIP

Colors



JACKET

GARMENT: CUT/SUB TRACK JACKET

MENS CODE - PLJK011

Ref Code - LSJK011

Sizes: 2XS - 7XL LSSPEC-5022CR

JUNIOR CODE - PLJK211

Ref Code - LSJK211

Sizes: J6 - J14 LSSPEC-7022CR

MAIN FABRIC CODE: 004

Detail: 110gsm 100% Polyester tactel

LINING BODY/UPPER SLEEVE FABRIC CODE: 0224

Detail: 135gsm 65% Polyester 35% Cotton

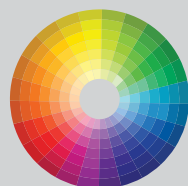
LINING LOWER SLEEVE FABRIC CODE: 047

Detail: 90gsm 100% Nylon Taffeta

CUT SUB COLOURS :

SUB 004

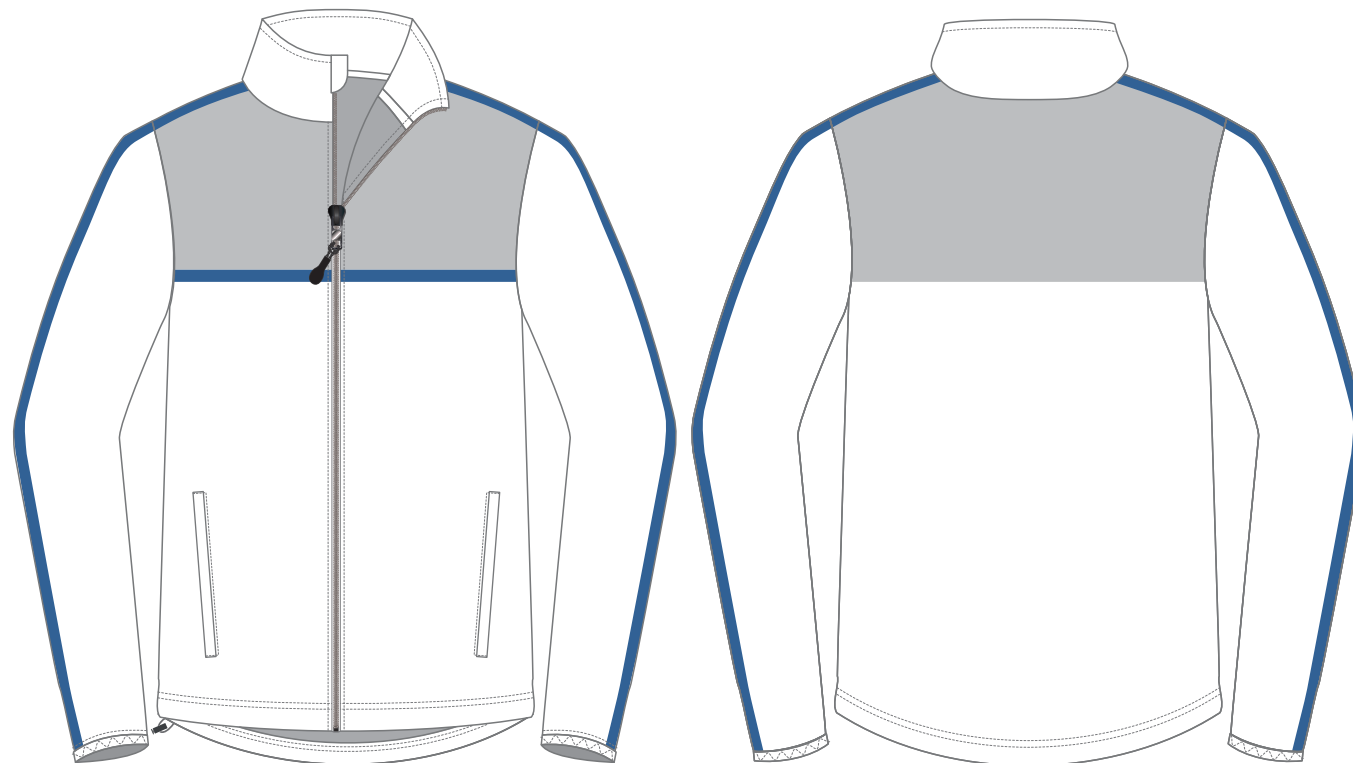
SUB 004



COMPOSITION:

	C&S 004 Main
	C&S 0224 Lining Body/ Upper SLV
	C&S 047 Lining Lower SLV
	C&S 004 - Panel 1
	SUB 004 - Panel 2

C&S 047



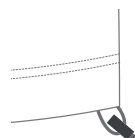
TRIMS: ZIP

Full Zip Collar with Zip Protector



TRIMS: Draw-String

Draw-string Toggle with Securing Loop



TRIMS: FULL ZIP

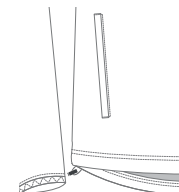
Colors

White 501
Black 580
Ink 960
Maroon 021
New Forest 890
Royal 067
Gold 056
Scarlet 65312



TRIMS: POCKET

Welt Zip Pockets



JACKET

GARMENT: BONDED 1/4 ZIP

MENS CODE - PLJK002

Ref Code - LSJK002

Sizes: 2XS - 7XL | LSSPEC-5022CR

MENS CODE - PLJK202

Ref Code - LSJK202

Sizes: J6 - J14 | LSSPEC-7022CR

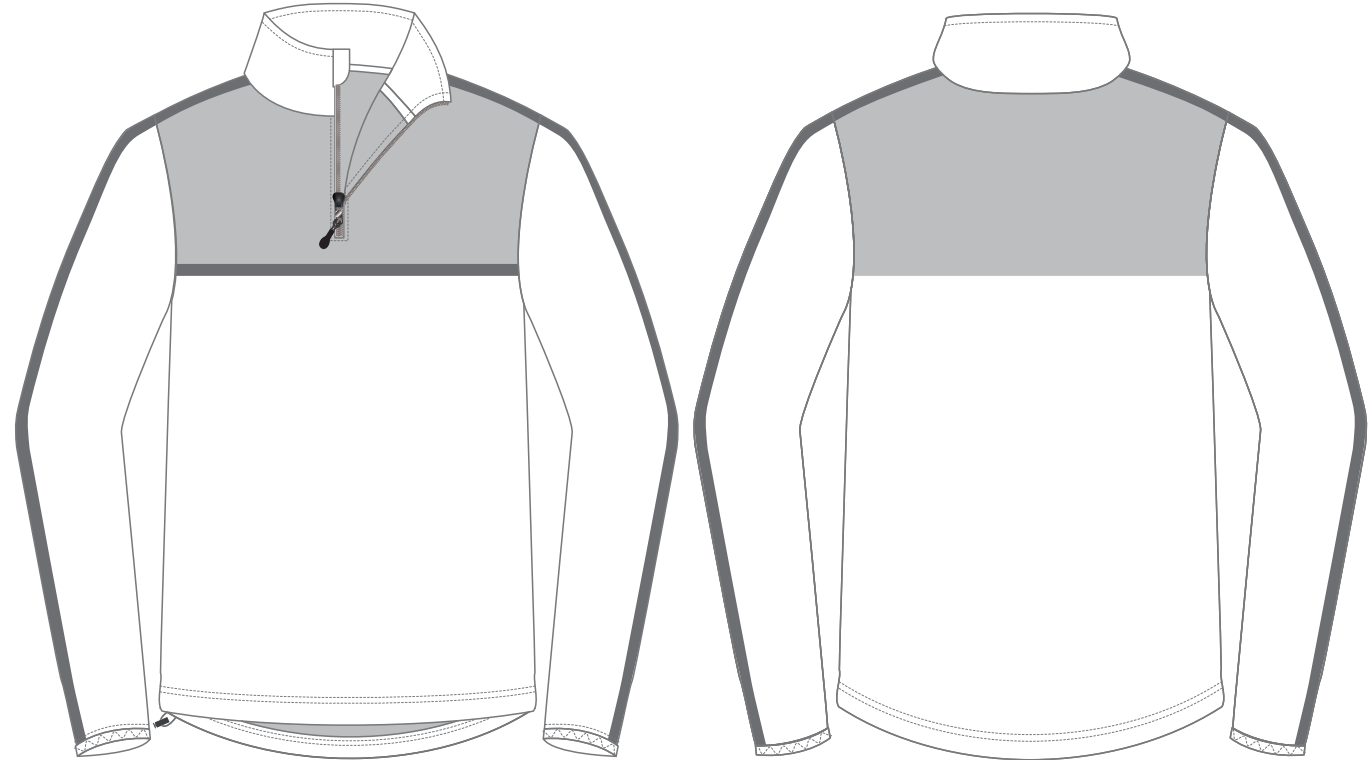
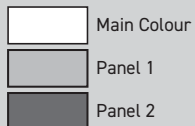
MAIN FABRIC CODE: 045

Detail: 256gsm 100% Polyester Light Weight Bonded Fleece

CUT AND SEW COLOURS :

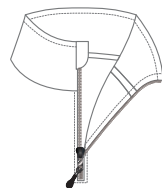


COMPOSITION:



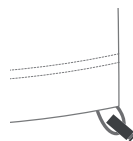
TRIMS: ZIP

1/4 Zip Collar with Hang Hood Storm Hoop with Velcro



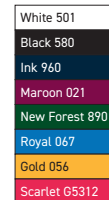
TRIMS: Draw-String

Draw-string Toggle with Securing Loop



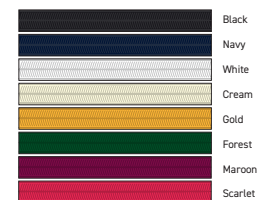
TRIMS: 1/4 ZIP

Colors



TRIMS:

Neck Tape
10mm 100% Polyester



JACKET

GARMENT: BONDED FULL ZIP

MENS CODE - PLJK005

Ref Code - LSJK005

Sizes: 2XS - 7XL

LSSPEC-5022CR

MENS CODE - PLJK205

Ref Code - LSJK205

Sizes: J6 - J14

LSSPEC-7022CR

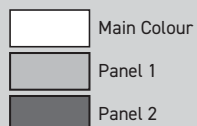
MAIN FABRIC CODE: 045

Detail: 256gsm 100% Polyester Light Weight Bonded Fleece

CUT AND SEW COLOURS :



COMPOSITION:



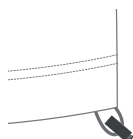
TRIMS: ZIP

Full Zip Collar with Zip Protector



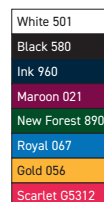
TRIMS: Draw-String

Draw-string Toggle with Securing Loop



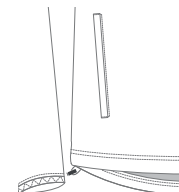
TRIMS: FULL ZIP

Colors



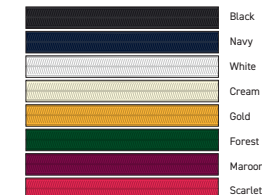
TRIMS: POCKET

Welt Zip Pockets



TRIMS:

Neck Tape
10mm 100% Polyester



JACKET

GARMENT: TRAVEL JACKET

MENS CODE - PLJK008

Ref Code - LSJK008

Sizes: 2XS - 7XL

LSSPEC-5022CR

MENS CODE - PLJK208

Ref Code - LSJK208

Sizes: J6 - J14

LSSPEC-7022CR

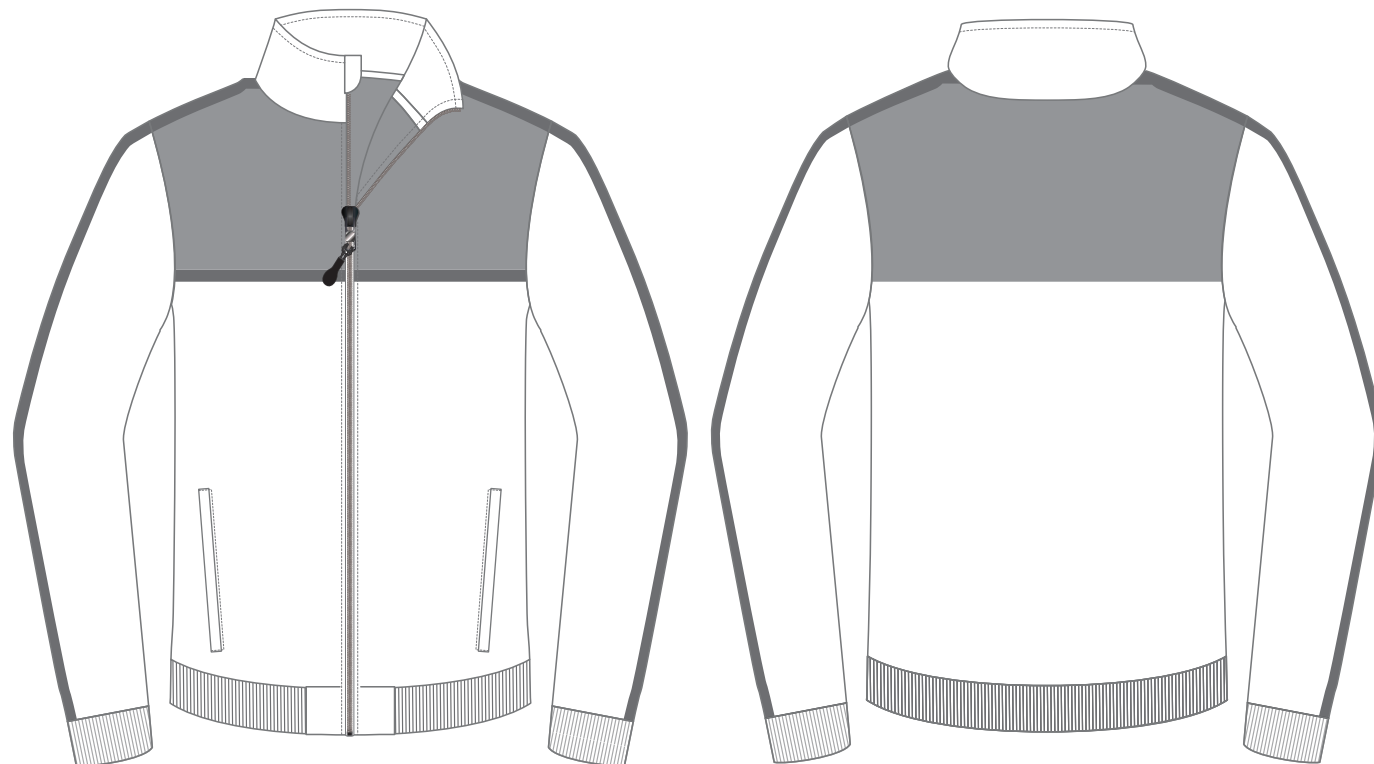
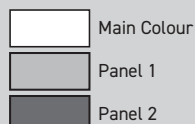
MAIN FABRIC CODE: 145

Detail: 280gsm 24% Cotton 76% Polyester 32S
Double Knit Interlock Shrinkage:-8%

CUT AND SEW COLOURS :



COMPOSITION:



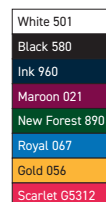
TRIMS: ZIP

Full Zip Collar
with Zip Protector



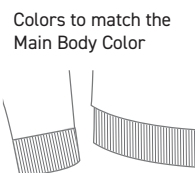
TRIMS: FULL ZIP

Colors



TRIMS: 2x2 Cuff & Band

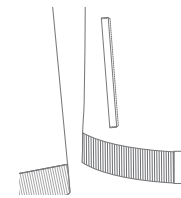
Colors



Colors to match the
Main Body Color

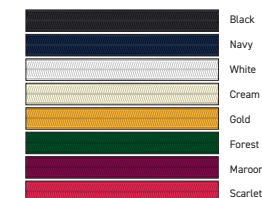
TRIMS: POCKET

Welt Zip Pockets



TRIMS:

Neck Tape
10mm 100% Polyester



JACKET

GARMENT: GILET

MENS CODE - PLJK015

Ref Code - LSJK015

Sizes: 2XS - 7XL

LSSPEC-5122CR

MAIN FABRIC CODE: 029

Detail: 100% Polyester Double Weave

LINING FABRIC CODE: 047

Detail: 100% Polyester 210T Taffeta

CUT AND SEW COLOURS :

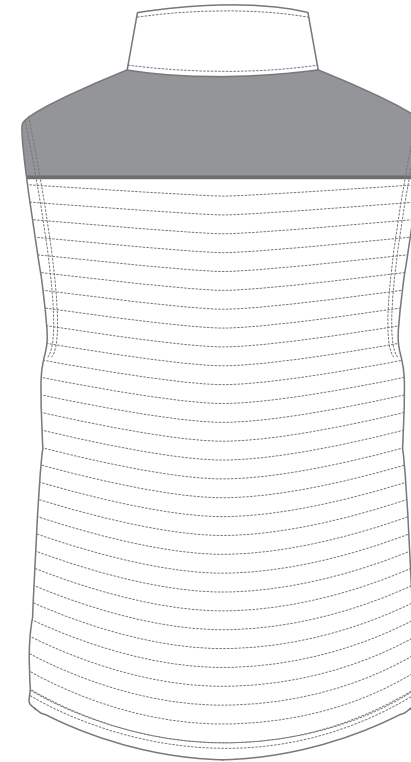
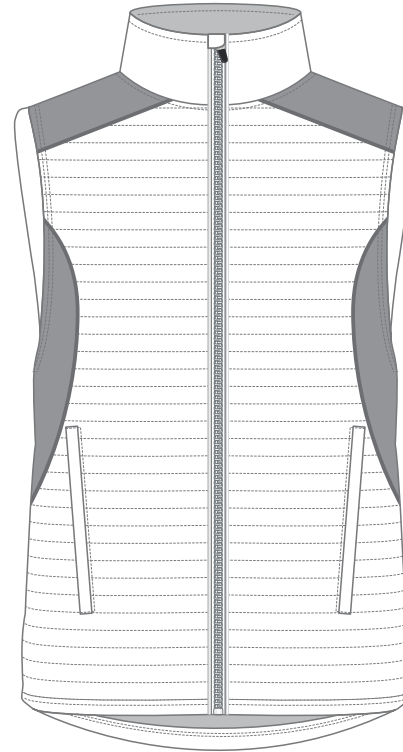
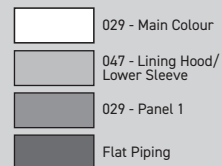
C&S 029



C&S 047



COMPOSITION:



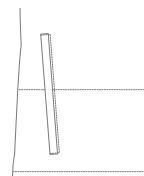
TRIMS: ZIP

Silver (Reflective Tape)
3mm Cord Piping
on both Sides of Zip



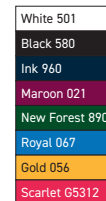
TRIMS: POCKET

Side Pocket



TRIMS: ZIP

Colors



JACKET

GARMENT: CUT/SUB TRACK JACKET

MENS CODE - PLJK012

Ref Code - LSJK012

Sizes: 2XS - 7XL LSSPEC-5022CR

JUNIOR CODE - PLJK212

Ref Code - LSJK212

Sizes: J6 - J14 LSSPEC-7022CR

MAIN FABRIC CODE: 004

Detail: 110gsm 100% Polyester tactel

LINING BODY/UPPER SLEEVE FABRIC CODE: 0224

Detail: 135gsm 65% Polyester 35% Cotton

LINING LOWER SLEEVE FABRIC CODE: 047

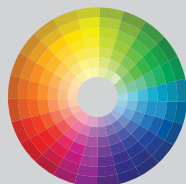
Detail: 90gsm 100% Nylon Taffeta

CUT SUB COLOURS :

C&S 004



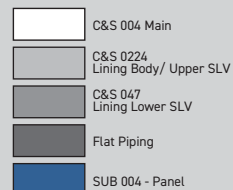
SUB 004



C&S 047



COMPOSITION:



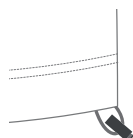
TRIMS: ZIP

Full Zip Collar with Zip Protector



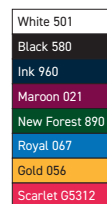
TRIMS: Draw-String

Draw-string Toggle with Securing Loop



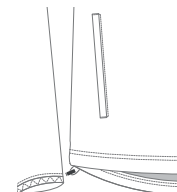
TRIMS: FULL ZIP

Colors



TRIMS: POCKET

Welt Zip Pockets



JACKET

GARMENT: BONDED 1/4 ZIP

MENS CODE - PLJK003

Ref Code - LSJK003

Sizes: 2XS - 7XL | LSSPEC-5022CR

MENS CODE - PLJK203

Ref Code - LSJK203

Sizes: J6 - J14 | LSSPEC-7022CR

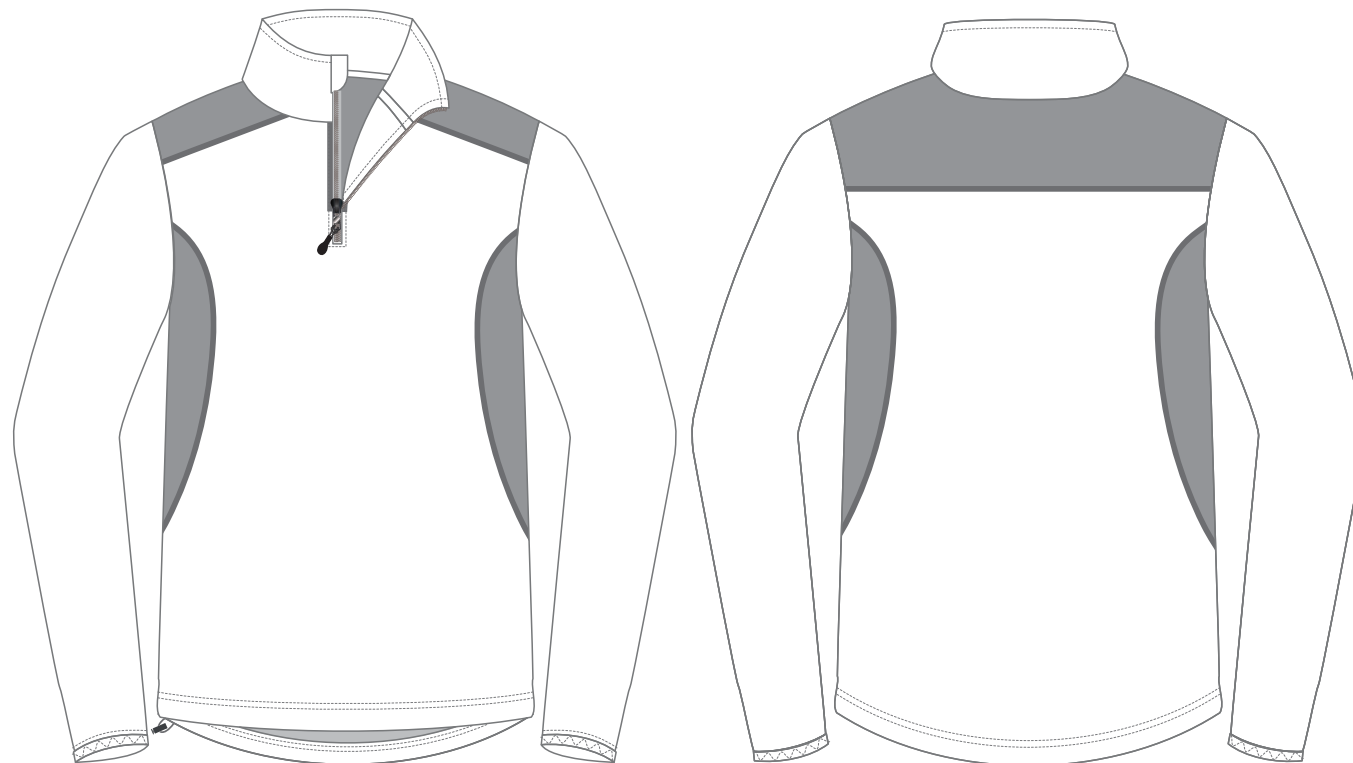
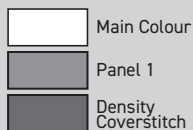
MAIN FABRIC CODE: 045

Detail: 256gsm 100% Polyester Light Weight Bonded Fleece

CUT AND SEW COLOURS :

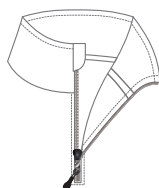


COMPOSITION:



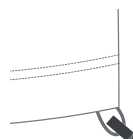
TRIMS: ZIP

1/4 Zip Collar with Hang Hood Storm Hoop with Velcro



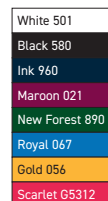
TRIMS: Draw-String

Draw-string Toggle with Securing Loop



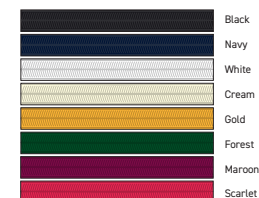
TRIMS: 1/4 ZIP

Colors



TRIMS:

Neck Tape
10mm 100% Polyester



JACKET

GARMENT: BONDED FULL ZIP

MENS CODE - PLJK006

Ref Code - LSJK006

Sizes: 2XS - 7XL | LSSPEC-5022CR

MENS CODE - PLJK206

Ref Code - LSJK206

Sizes: J6 - J14 | LSSPEC-7022CR

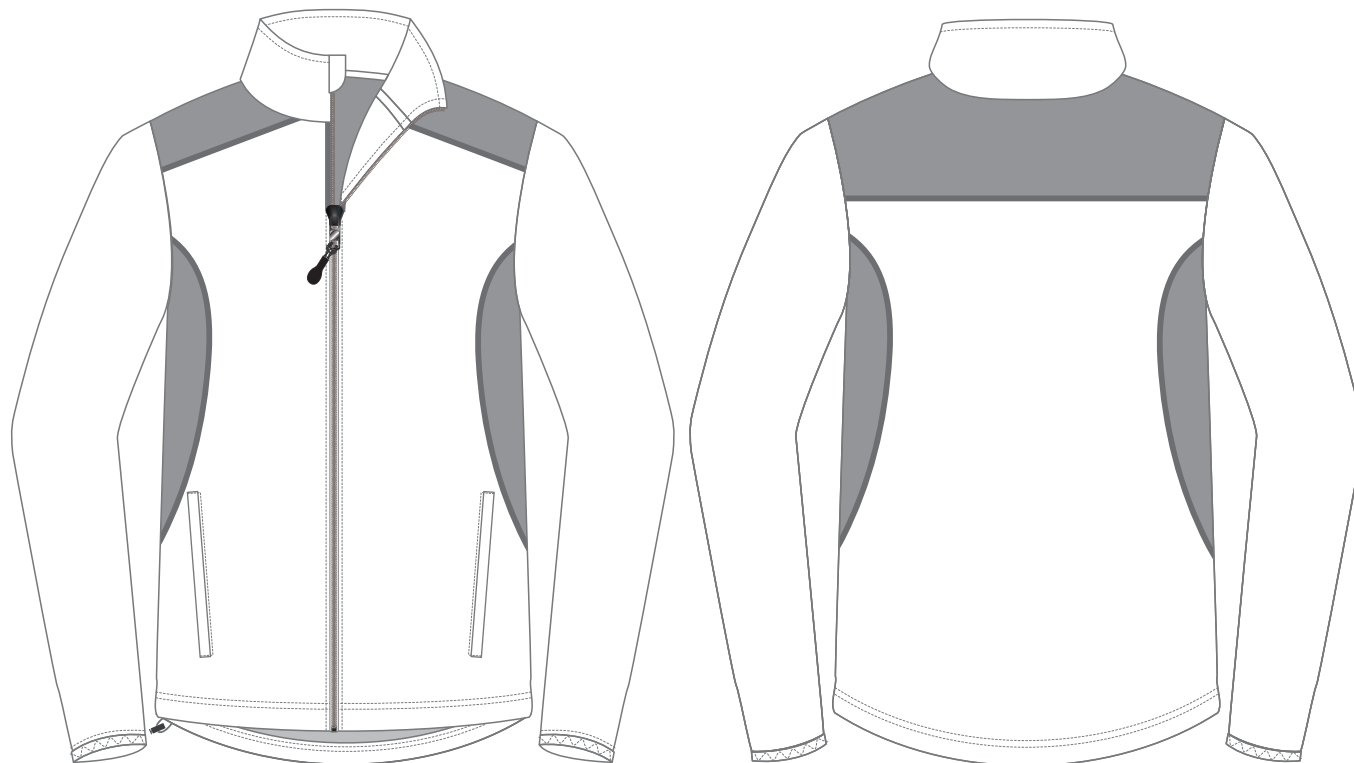
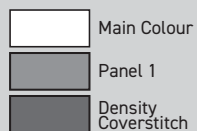
MAIN FABRIC CODE: 045

Detail: 256gsm 100% Polyester Light Weight Bonded Fleece

CUT AND SEW COLOURS :



COMPOSITION:



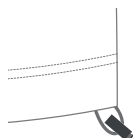
TRIMS: ZIP

Full Zip Collar with Zip Protector



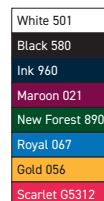
TRIMS: Draw-String

Draw-string Toggle with Securing Loop



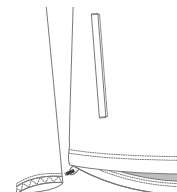
TRIMS: FULL ZIP

Colors



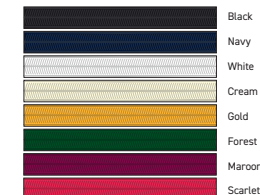
TRIMS: POCKET

Welt Zip Pockets



TRIMS:

Neck Tape
10mm 100% Polyester



JACKET

GARMENT: TRAVEL JACKET

MENS CODE - PLJK009

Ref Code - LSJK009

Sizes: 2XS - 7XL | LSSPEC-5022CR

MENS CODE - PLJK209

Ref Code - LSJK209

Sizes: J6 - J14 | LSSPEC-7022CR

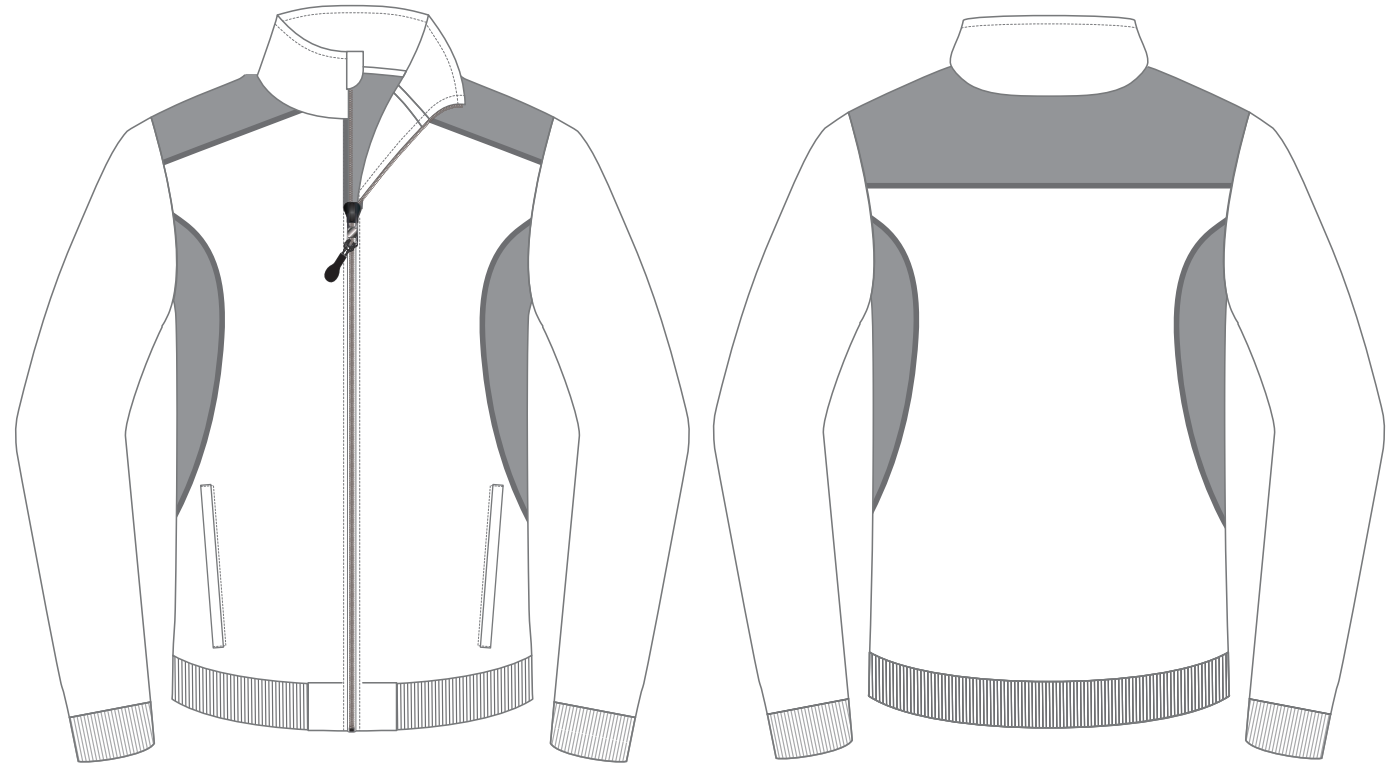
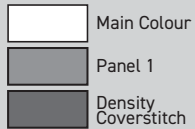
MAIN FABRIC CODE: 145

Detail: 280gsm 24% Cotton 76% Polyester 32S
Double Knit Interlock Shrinkage:-8%

CUT AND SEW COLOURS :



COMPOSITION:



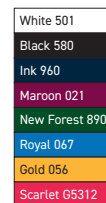
TRIMS: ZIP

Full Zip Collar with Zip Protector



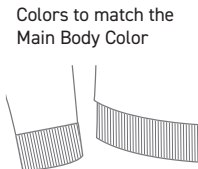
TRIMS: FULL ZIP

Colors



TRIMS: 2x2 Cuff & Band

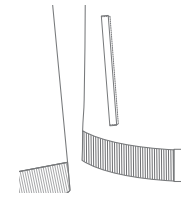
Colors



Colors to match the Main Body Color

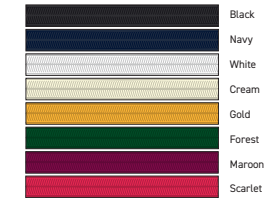
TRIMS: POCKET

Welt Zip Pockets



TRIMS:

Neck Tape
10mm 100% Polyester



JACKET

GARMENT: SOFTSHELL JACKET

MENS CODE - PLJK016

Ref Code - LSJK016

Sizes: 2XS - 7XL

LSSPEC-5022CR

MAIN FABRIC CODE: 092

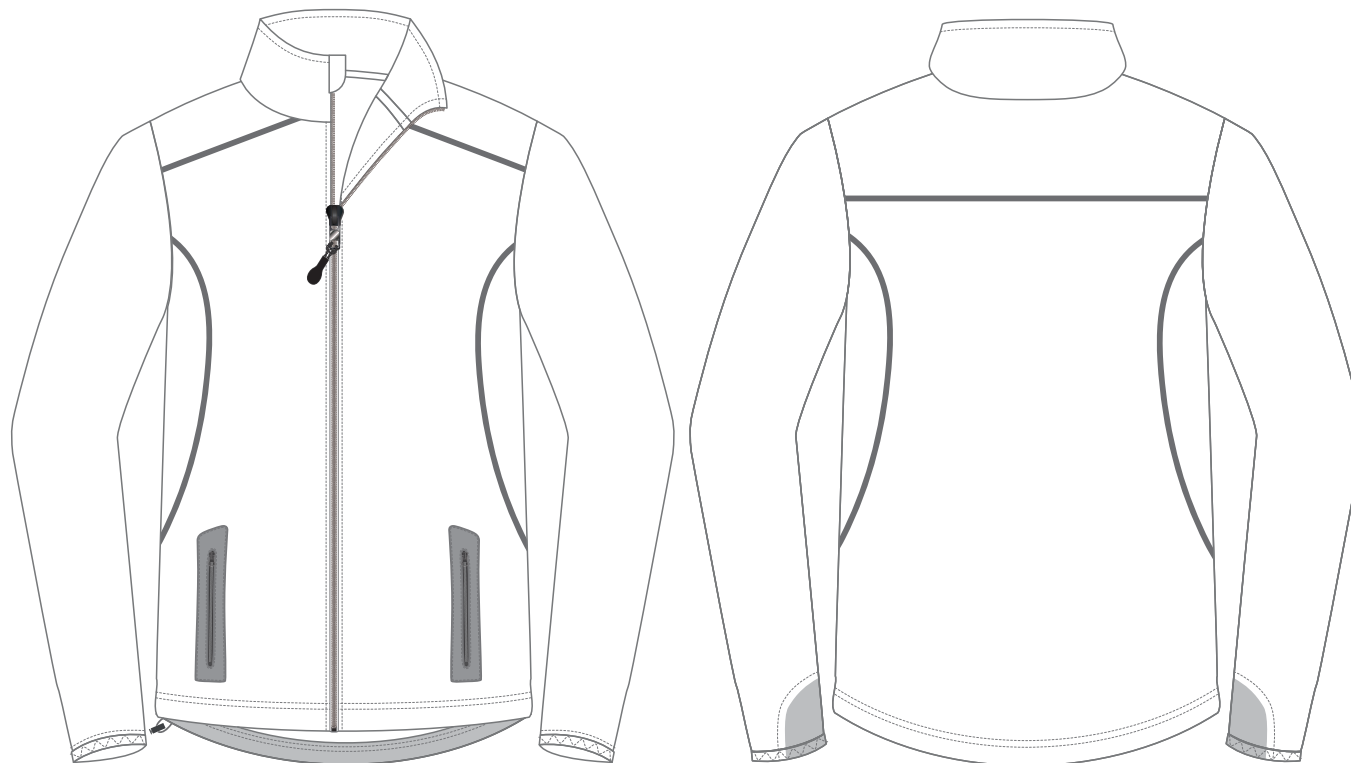
Detail: 85% Polyester, 15% Spandex with 100% Polyester Fleece

MAIN FABRIC CODE: 010

Detail: 100% Polyester Micro Fibre

MAIN FABRIC CODE: 004

Detail: 110gsm 100% Polyester tactel



CUT AND SEW COLOURS :

C&S 010



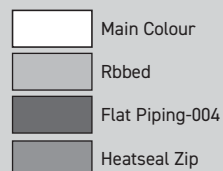
C&S 092



C&S 004



COMPOSITION:



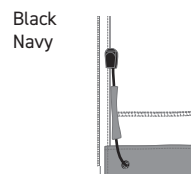
TRIMS: ZIP

Full Zip Collar with Zip Protector



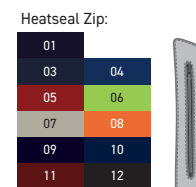
TRIMS: Draword

Both sides Tunnel with Elastic Drawcord



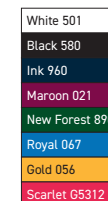
TRIMS: ZIP

Side Zip Pockets with Heatseal Zip



TRIMS: FULL ZIP

Colors



TRIMS: RIBBED 1x1

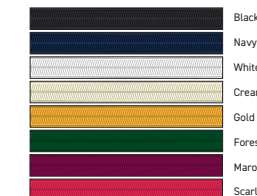
Colors

White
Black
Navy
Royal
Scarlet
Maroon



TRIMS:

Neck Tape
10mm 100% Polyester



JACKET

GARMENT: GILET

MENS CODE - PLJK017

Ref Code - LSJK017

Sizes: 2XS - 7XL

LSSPEC-5122CR

MAIN FABRIC CODE: 029

Detail: 100% Polyester Double Weave

LINING FABRIC CODE: 047

Detail: 100% Polyester 210T Taffeta

CUT AND SEW COLOURS :

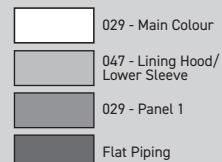
C&S 029



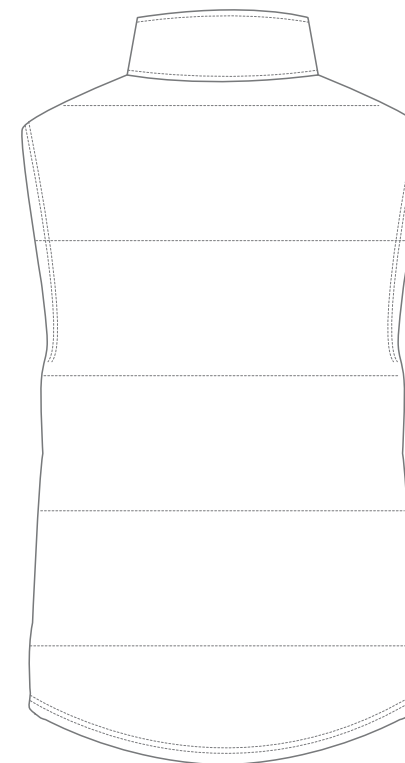
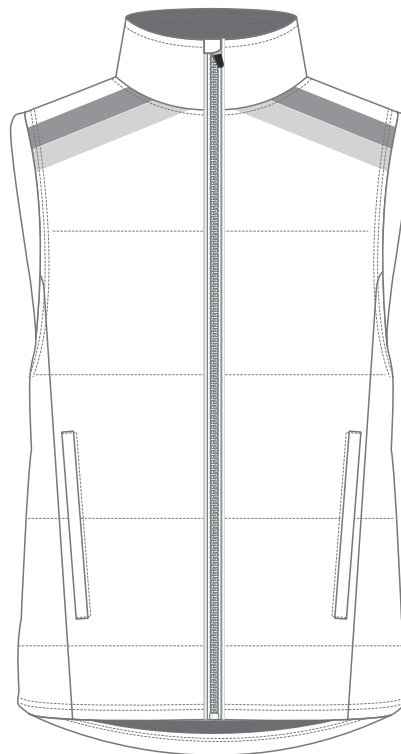
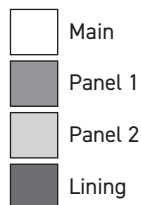
C&S 047



COMPOSITION:

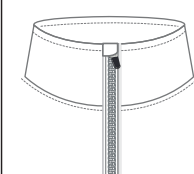


COMPOSITION :



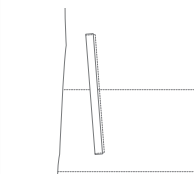
TRIMS: ZIP

Silver (Reflective Tape)
3mm Cord Piping
on both Sides of Zip



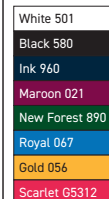
TRIMS: POCKET

Side Pocket



TRIMS: ZIP

Colors



JACKET

GARMENT: CUT/SUB TRACK JACKET

MENS CODE - PLJK018

Ref Code - LSJK018

Sizes: 2XS - 7XL

LSSPEC-5022CR

JUNIOR CODE - PLJK218

Ref Code - LSJK218

Sizes: J6 - J14

LSSPEC-7022CR

MAIN FABRIC CODE: 004

Detail: 110gsm 100% Polyester tactel

LINING BODY/UPPER SLEEVE FABRIC CODE: 0224

Detail: 135gsm 65% Polyester 35% Cotton

LINING LOWER SLEEVE FABRIC CODE: 047

Detail: 90gsm 100% Nylon Taffeta

CUT SUB COLOURS :

C&S 004




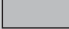



SUB 004



C&S 047



COMPOSITION:

-  C&S 004 Main
-  C&S 0224 Lining Body/ Upper SLV
-  C&S 047 Lining Lower SLV
-  C&S 004 - Panel 1
-  SUB 004 - Panel 2



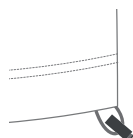
TRIMS: ZIP

Full Zip Collar with Zip Protector



TRIMS: Draw-String

Draw-string Toggle with Securing Loop



TRIMS: FULL ZIP

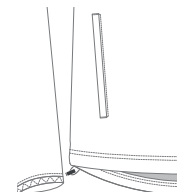
Colors

- White 501
- Black 580
- Ink 960
- Maroon 021
- New Forest 890
- Royal 067
- Gold 056
- Scarlet G5312



TRIMS: POCKET

Welt Zip Pockets



JACKET

GARMENT: BONDED 1/4 ZIP

MENS CODE - PLJK019

Ref Code - LSJK019

Sizes: 2XS - 7XL | LSSPEC-5022CR

MENS CODE - PLJK219

Ref Code - LSJK219

Sizes: J6 - J14 | LSSPEC-7022CR

MAIN FABRIC CODE: 045

Detail: 256gsm 100% Polyester Light Weight Bonded Fleece

CUT AND SEW COLOURS :



COMPOSITION:



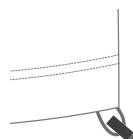
TRIMS: ZIP

1/4 Zip Collar with Hang Hood Storm Hoop with Velcro



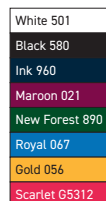
TRIMS: Draw-String

Draw-string Toggle with Securing Loop



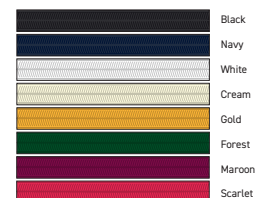
TRIMS: 1/4 ZIP

Colors



TRIMS:

Neck Tape
10mm 100% Polyester



JACKET

GARMENT: BONDED FULL ZIP

MENS CODE - PLJK020

Ref Code - LSJK020

Sizes: 2XS - 7XL | LSSPEC-5022CR

MENS CODE - PLJK220

Ref Code - LSJK220

Sizes: J6 - J14 | LSSPEC-7022CR

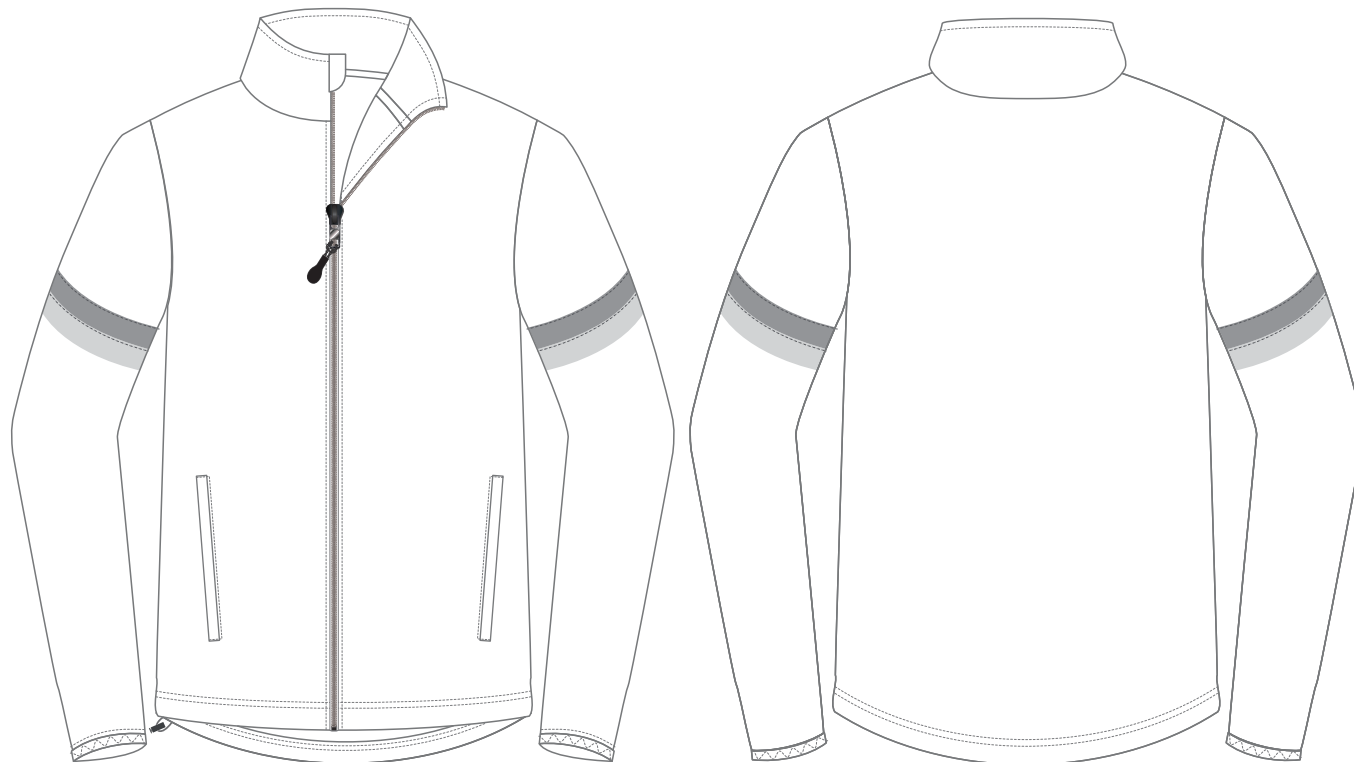
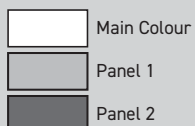
MAIN FABRIC CODE: 045

Detail: 256gsm 100% Polyester Light Weight Bonded Fleece

CUT AND SEW COLOURS :



COMPOSITION:



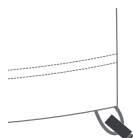
TRIMS: ZIP

Full Zip Collar with Zip Protector



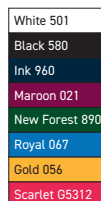
TRIMS: Draw-String

Draw-string Toggle with Securing Loop



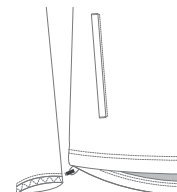
TRIMS: FULL ZIP

Colors



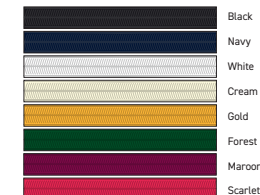
TRIMS: POCKET

Welt Zip Pockets



TRIMS:

Neck Tape
10mm 100% Polyester



JACKET

GARMENT: TRAVEL JACKET

MENS CODE - PLJK021

Ref Code - LSJK021

Sizes: 2XS - 7XL | LSSPEC-5022CR

MENS CODE - PLJK221

Ref Code - LSJK221v

Sizes: J6 - J14 | LSSPEC-7022CR

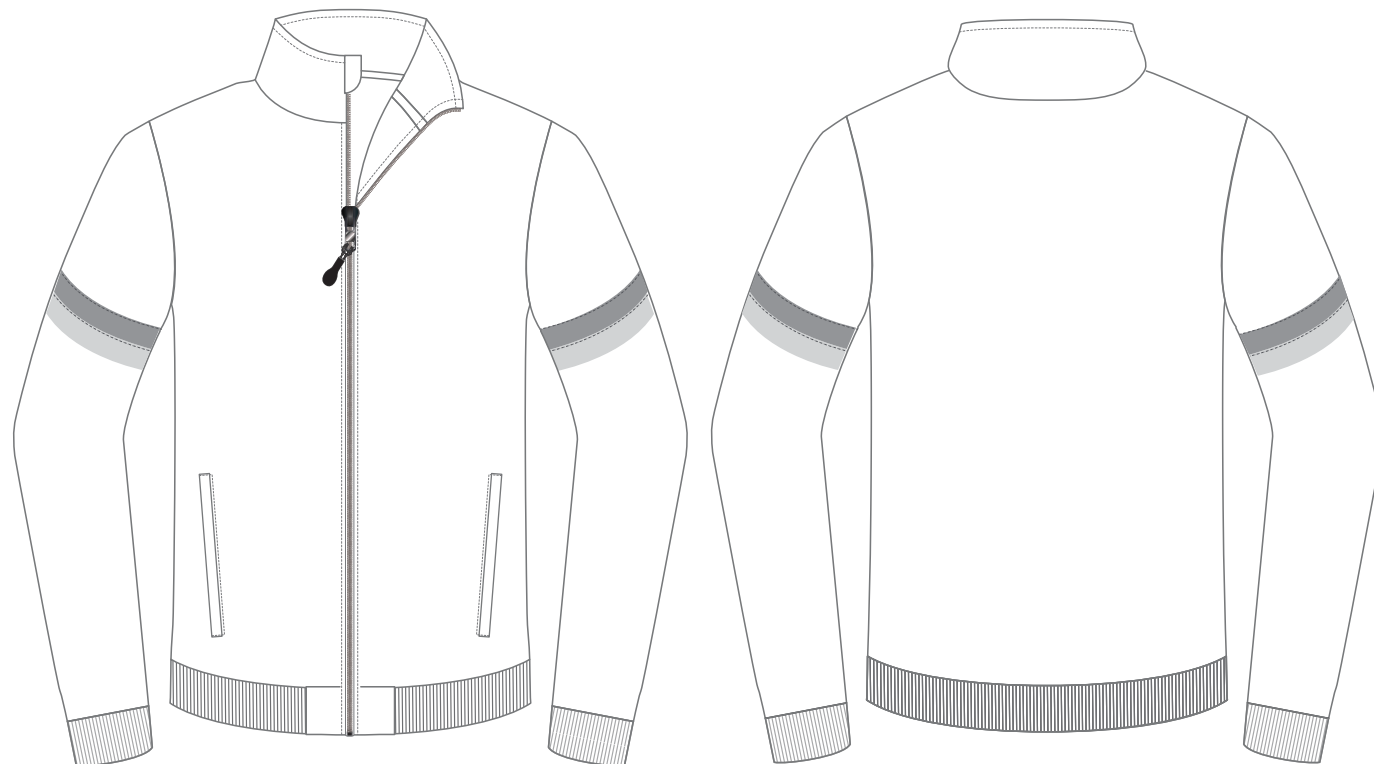
MAIN FABRIC CODE: 145

Detail: 280gsm 24% Cotton 76% Polyester 32S
Double Knit Interlock Shrinkage:-8%

CUT AND SEW COLOURS :



COMPOSITION:



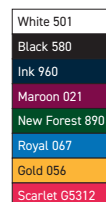
TRIMS: ZIP

Full Zip Collar with Zip Protector



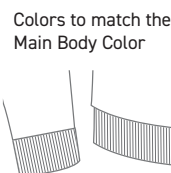
TRIMS: FULL ZIP

Colors



TRIMS: 2x2 Cuff & Band

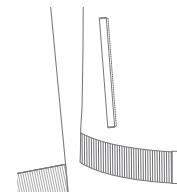
Colors



Colors to match the Main Body Color

TRIMS: POCKET

Welt Zip Pockets



TRIMS:

Neck Tape
10mm 100% Polyester

